

**INSOL**®

**ARCHITECTURAL CANOPIES**



*"The difference the right canopy makes can be measured in foot traffic. A pedestrian friendly frontage that's aesthetically enticing and provides shelter from the elements, draws people in. Our canopies are designed to do just that. They add to the visual identity of the building and begin the entry sequence, guiding you inside and developing those crucial first impressions".*

**GREG SIMMONS**  
CEO

## PEDESTRIAN FRIENDLY FRONTAGES.

---

Pedestrian friendly areas are characterised by the need to maximize the ease and comfort of the walking experience. They must have good 'walkability' if the built environment is considered to be walking friendly.

Research shows people don't walk where there is poor quality lighting, a lack of shade and/or a lack of shelter from inclement weather. Canopies help overcome each of these objections. Where local Councils have designated Pedestrian Friendly Zones, canopies are usually subject to design considerations within the rules for Pedestrian Friendly Frontages.

Our canopies will help businesses (and Councils) meet the guidelines and goals set. They can provide continuous weather protection and form the essential link from location to location.

We have designed canopies which create both aesthetic and social benefits, creating the best possible conditions for pedestrian freedom of movement. They provide an economic boost to shopping areas, with studies showing a pedestrian first design improves retail performance and competitiveness.

## INTRODUCING HORIZON CANOPIES.

A proprietary approach to canopy design and development has led to the development of the Horizon Canopies range. Simple and effective in meeting pedestrian friendly frontage regulations and needs, the facias are fully customisable for a bespoke finish.

Adding to the simplicity is our unique approach, bringing canopy construction under one roof and removing the complication of on-site interdependencies and the number of contractors on-site.

The Horizon Canopies range includes multiples connection options and can incorporate PET (Polyethylene terephthalate) glass and integrated lighting for night-time illumination.

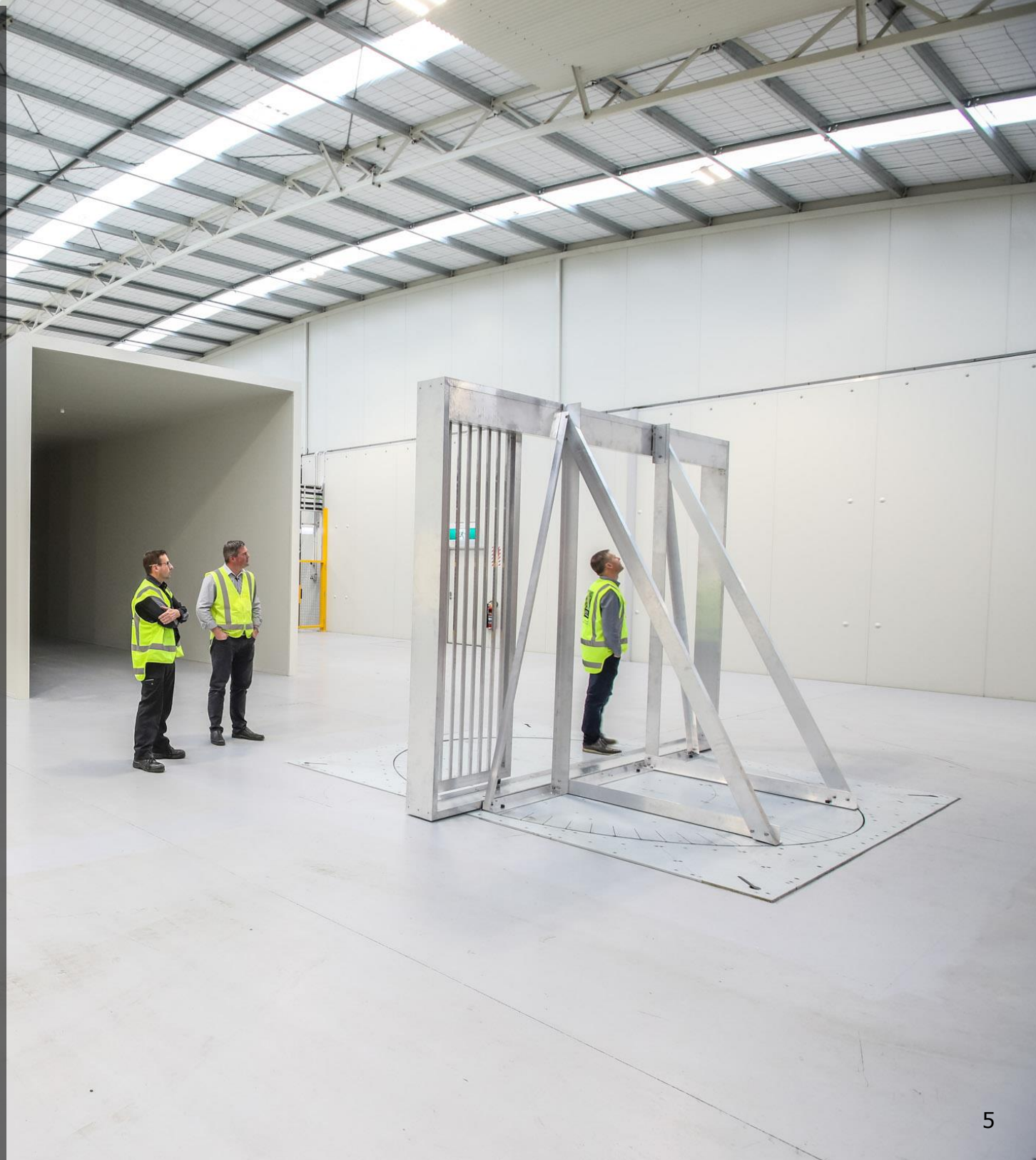


# ENGINEERING

Engineering canopies to withstand upward and downward forces is critical, as the loads generated by wind and snow on a canopy can be significant.

PS1's are available for all standard Insol canopy designs and we can provide full engineering services for custom canopies.

We also have our own wind tunnel available to physically test 1:1 scale mock-ups for projects that demand advanced risk mitigation.



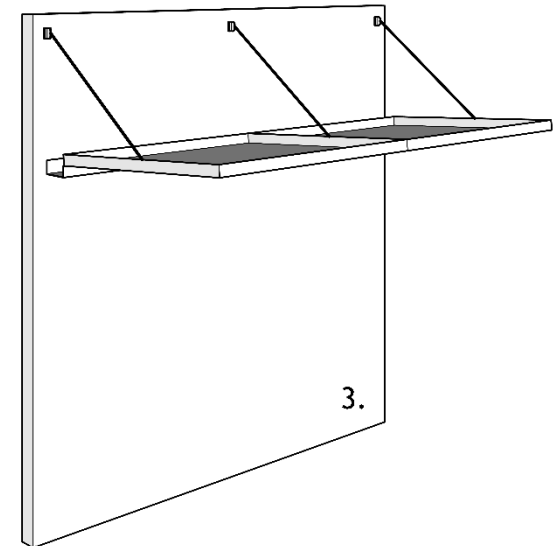
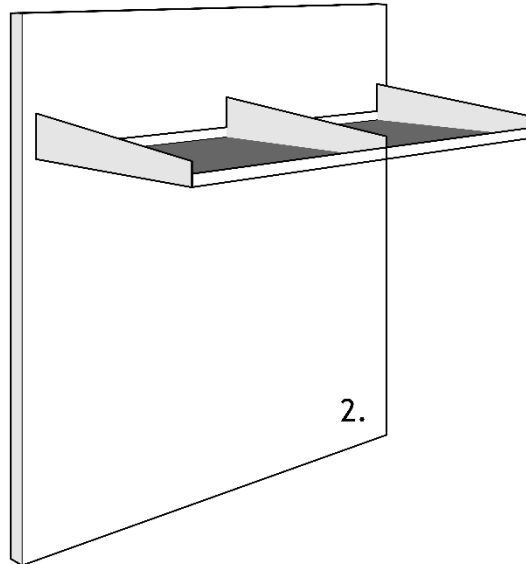
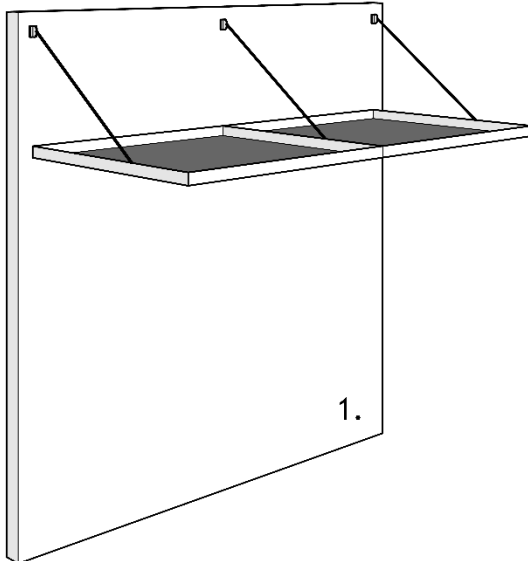
## CANOPY SHAPES

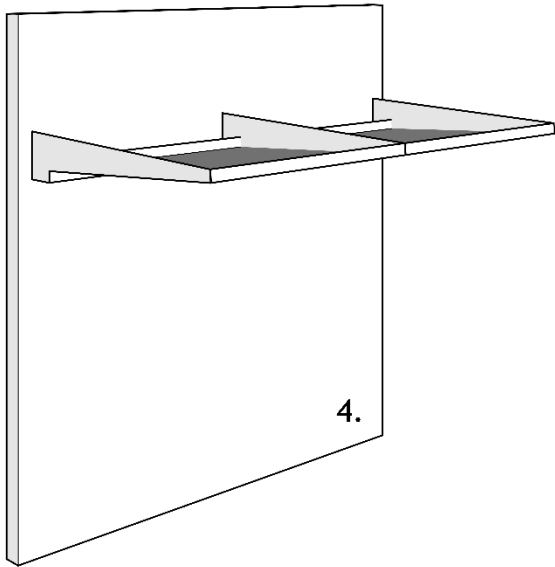
---

The Horizon Canopy range comes in a number of standard shapes. Customised options are available, and we offer in a full design, test and build service to meet more intricate project requirements.

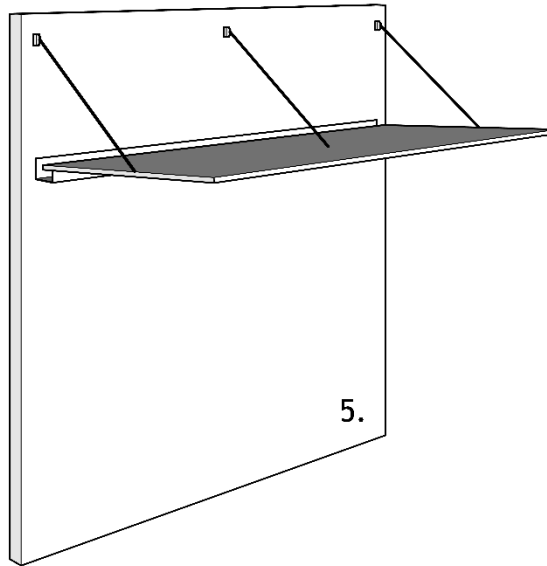
Fixing details for Horizon Canopies are available upon request.

- 1. Horizon Canopy with tie rods*
- 2. Horizon Canopy with outrigger brackets*
- 3. Horizon Canopy and gutter, with tie rods*

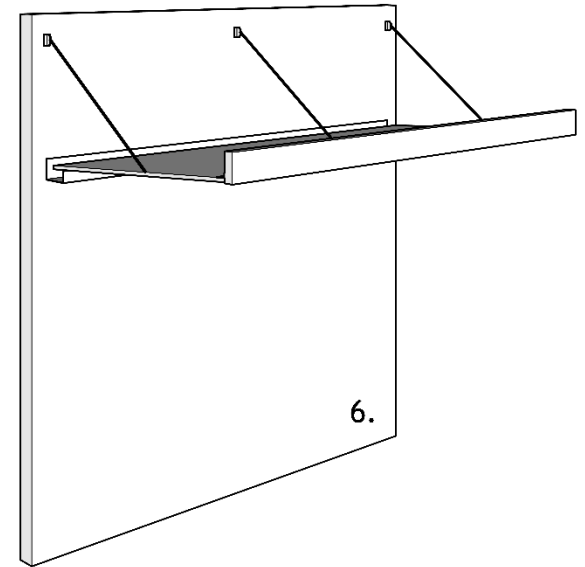




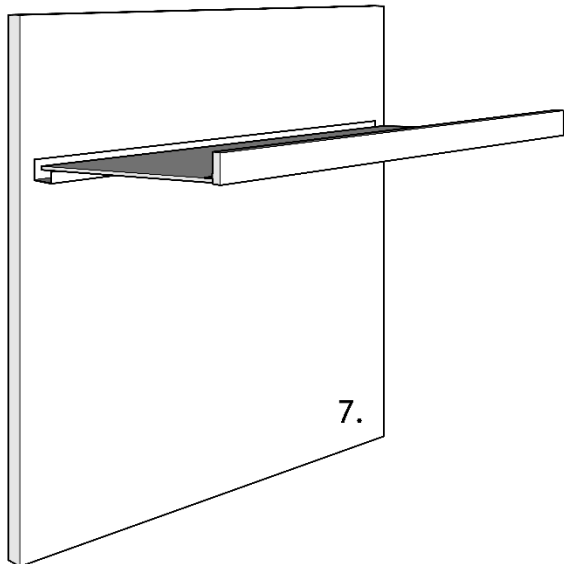
4.



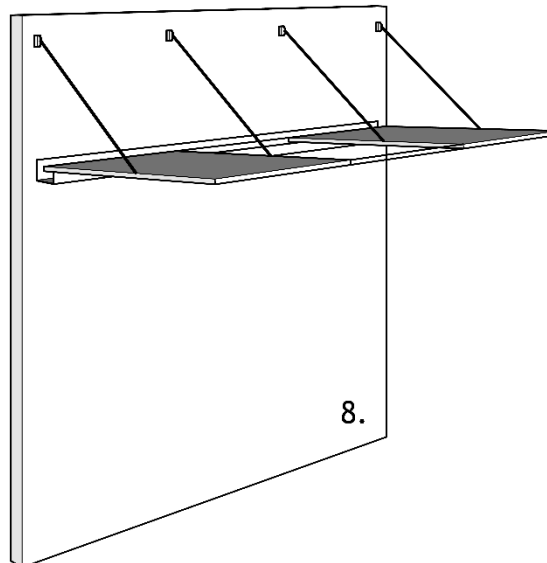
5.



6.



7.



8.

4. *Horizon Canopy and gutter, with outrigger brackets*
5. *Horizon Slim Canopy with tie rods*
6. *Horizon Slim Canopy and fascia with tie rods*
7. *Horizon Slim Canopy and Fascia – cantilever model*
8. *Horizon Slim Canopy and glazing inserts, with tie rods*



# RISLAND APARTMENTS

---

**Project Credits**

**Location:** Auckland

**Architect:** Leuschke Group Architects

**Builder:** CMP Construction





With the three blocks creating a vertical village, all gathered around the central landscaped courtyard, Risland Albany is an apartment complex of attractive simplicity.

Positioned above the main entrances, the canopies are customised from the Azimuth range and made from 4mm folded aluminium, finished in a Duratec powdercoat finish. Attachment is via support brackets to the primary structure. Any water drains to the gutter at the back of the canopy.

All manufacturing was completed off-site, reducing the need for layers of subcontractors and complicated project interdependencies.

Although the dark bronze canopies offer some protection from the elements, their primary purpose is undoubtedly aesthetic and to provide the essential human scale to the apartment complex.

# FLEX FITNESS GYMNASIUM

**Project Credits:**

**Client:** Flex Fitness

**Location:** Howick, Auckland

**Architect:** Taylored Studio

**Builder:** Miro Construction

SKILL | ATHLETIC

24 HOUR FITNESS





A custom canopy wraps around the exterior of Flex Fitness, offering members shelter from the elements as it guides them to the main entranceway.

In total, the canopy is made up from 54 linear metres of 3mm aluminium single skin, all of which is 1000mm deep. This was then powder coated to precisely match the grey of the building exterior, adhering strictly to the strong brand identity that's instantly recognisable to the clubs' members and carries across their numerous locations. Drainage slots are located on the front edge of the canopy, finishing this simple yet highly effective canopy project.







# BLDISLOE LANE

**Project Credits:**

**Client:** Auckland Council

**Location:** Auckland CBD

**Architect:** Creative Spaces Ltd

**Builder:** Fletcher Construction

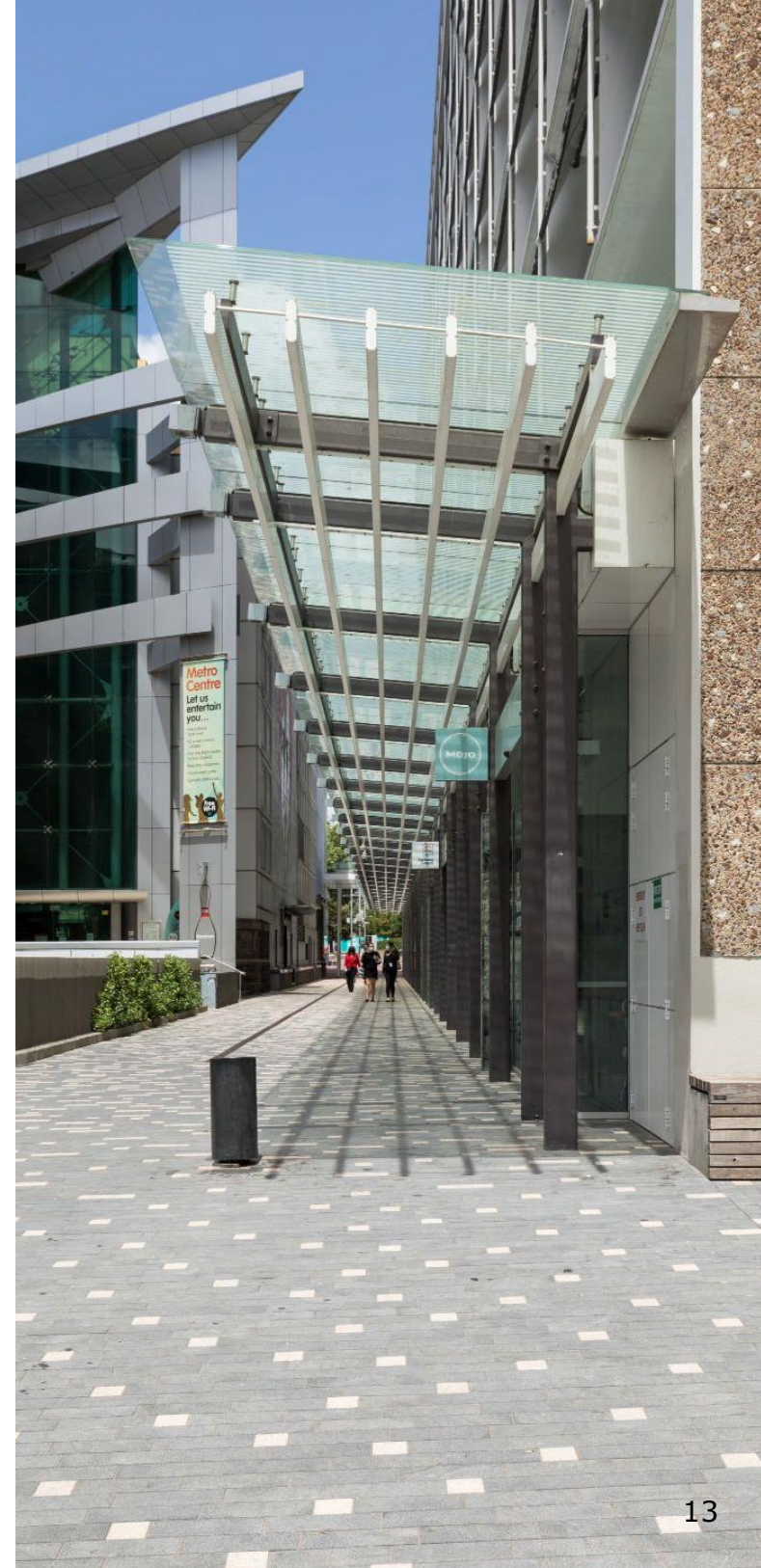




Bledisloe Lane is a popular pedestrian route between Wellesley Street West and Aotea Square. Previously dark and oppressive, the new canopy strikes a critical balance of openness and shelter.

Solaris 200x50 louvres blades have been fixed with aluminium bracketry to a steel support structure, which is topped with reinforced glazing. The louvre blades are positioned to provide an enjoyable inner-city experience when the sun is directly overhead. Foot traffic is shaded and the glazed building frontages benefit from the control of solar gain.

On less sunny days, the glazed canopy offers a trouble-free path for dry and easy navigation through this popular thoroughfare. What was previously enclosed and slightly oppressive is now light, bright and attractive.





# STRATA VIEWS

**Project Credits**

**Location:** Tauranga

**Architect:** Baillie Architecture

**Builder:** Watts & Hughes Construction







Strata Views is a prime example of how the prudent use of canopies, as part of a renovation, can breathe new life into a tired structure. The old building is barely recognisable, the new character delivered by the canopies completely changing the exterior dynamic of the aesthetic.

The Insol Horizon Canopy system is fixed at the rear to the wall structure and supported at the front with stainless steel tie rods. Various module sizes, up to 1800 long x 1200 deep, provide shelter around the north and west elevations. This blend of functional and visual benefits delivers a more contemporary look and feel which will increase the appeal of the space, maximising the returns for the owners.

# EDEN VIEW APARTMENTS

**Project Credits**

**Location:** Auckland

**Architect:** Paul Brown & Associates

**Builder:** GN Construction







A classical British architectural style on the fringes of the City, Eden View Apartments are awash with light and luxury. Two five-storey blocks are joined with a central, open common area of stunning modernity which sits in glorious contrast to the red brick exterior.

The lower levels feature canopies made from folded 3mm aluminium panels with a standard Dulux Duratec powder coat. They are strategically located over entry and exit points, or the stairwell termination point at a new level.

On levels 4 and 5, the canopies are formed from slightly larger panels, 1375mm wide and 1905mm deep, which drain into a continuous gutter at the rear. The design keeps occupants sheltered from the rain, (and sun) channelling excess water away and preventing it from becoming problematic on the lower levels.



# WHENUAPAI CHILDCARE CENTRE

---

## Project Credits

**Location:** Auckland

**Architect:** +MAP Architects

**Builder:** Clearwater Construction







A place for young minds to develop and grow, Whenuapai Childcare Centre makes great use of natural materials and a design which allows for the well documented, education boosting benefits of light and fresh air. The canopies play an important role, making sure the light is never too much, the air is cool and can continue to circulate, even on those wet summer days.

A total of 27 custom folded canopies were cleverly integrated into large wooden posts, which have a small and subtly moving point of egress which creates an almost falling domino like aesthetic which is mesmerising from the right angle.



*We specialise in design solutions for Complex projects with demanding architectural detail and construction methodology. Our combination of experience and expertise in design, engineering, manufacturing, and construction management makes us uniquely placed to bring visions to fruitions.*

*The product range includes designs in expanded and perforated sheet metal, grating, mesh and timber. Our extruded aluminium louvres are used extensively across commercial properties to enhance the building character, provide solar control, privacy, and occupant comfort.*

*With all things, we only focus on an issue long enough to understand it – then we get to work on the solution. This is central to the Insol culture and the difference we bring. Working with architects on their vision, builders on their building methodology, or adjusting designs to meet budget. It's all completed with the considered efficiency you'd expect from the experts trusted by leading Architects and Construction firms.*







7 Waokauri Place  
Mangere Auckland 2022  
Ph: 09 276 9735



34 Onslow Street  
PO Box 231, Invercargill 9812  
Ph: 03 216 3287



enquiries@insol.co.nz  
[www.insolarchitectural.com](http://www.insolarchitectural.com)



