



INSOL®

ARCHITECTURAL FACADE TREATMENTS

THE APARTMENT COLLECTION

"Facades on apartments are always fascinating. They provide a glimpse of the character of the complex, setting the tone and feeling for what can be expected as you enter. At the same time, they address the adjacent street and enhance the immediate environment. It's a complicated visual juggling act and seeing how our creations breathe life into the architectural intent is very rewarding".

GREG SIMMONS

CEO



Apartments facades are arguably the most important. There's a deep connection to where we live, it becomes part of our identity, provides security and a sense of belonging. At the centre of our world is our home and with the stakes so high, the façade has to be just right.

A number of prestigious neighbourhoods and postcodes in New Zealand feature Insol facades. We've been fortunate enough to work with leading architects, helping develop landmark apartments complexes with unique designs, constructed to the most exacting standards and quality. Such as the award-winning Clyde Quay Wharf Apartments in Wellington which used 5 different louvre systems to achieve its overall distinctive aesthetic. Or the shimmering reflection from the anodised tubes that adorn Outlook Apartments on Kapa Road. These are apartments that attract you to them as you say to yourself, 'I wonder what it would be like to live there.'

One of the reasons for the Insol Wind Tunnel was to test façade elements for Apartments. With occupant comfort being paramount, be it from privacy, solar control, or noise, we understood there is a high expectation for the apartment owner's own world to feel part of, yet apart from, the rest of the complex. Anything, such as wind noise, which can detract from the experience becomes a problem magnified and multiplied by the number of tenants.

This led to the development of an extended range of façade options, all tested and rated for wind noise. Custom designs may be tested to the same standards. They all meet the complicated mitigation requirements for architects and developers and we believe them to be the most tested in New Zealand.

CLYDE QUAY WHARF

Project Credits

Location: Wellington

Architect: Athfield Architects

Builder: LT McGuinness Construction





Located on Wellington Harbour, Clyde Quay Apartments required an extensive louvre privacy system to shield tenants from the gazes of each other and the public access area below. There was also a requirement that harbour views weren't inhibited.

Due to the extreme environment, specific design work was required to ensure the durability and structural integrity of the louvre system, including CFD modelling of wind behaviour around our louvre systems.

This highlighted areas that were subject to extreme localised wind pressures, which can't be determined by traditional engineering methods.

The design used five different louvre systems to provide the required privacy and to create the unique look of the building, accentuating and defining the shop aesthetic with the 'prow' and 'hull'. The result is a remarkable building which was awarded the overall NZ Architecture Award in 2015.

XXXII SHELLEY BEACH ROAD

Project Credits

Location: Auckland

Architect: Paul Brown & Associates

Builder: GN Construction





XXXII is an exquisitely crafted complex that has been developed to an extremely high standard. The azimuth screens are perfectly balanced with the design, delivering much needed functionality of occupants who appreciate both their privacy and those spectacular views.

The panels were manufactured from aluminium grating that comprised of 40x30 flat bars and a 50x6 angle perimeter frame.

The screens could then be adjusted to the desired position allowing occupants the ability to either fully open up the apartments or to provide the desired levels of privacy and solar control.

From the exterior, the screens subtly blend in with the muted colours of the apartment complex.

ALEXANDRA PARK APARTMENTS

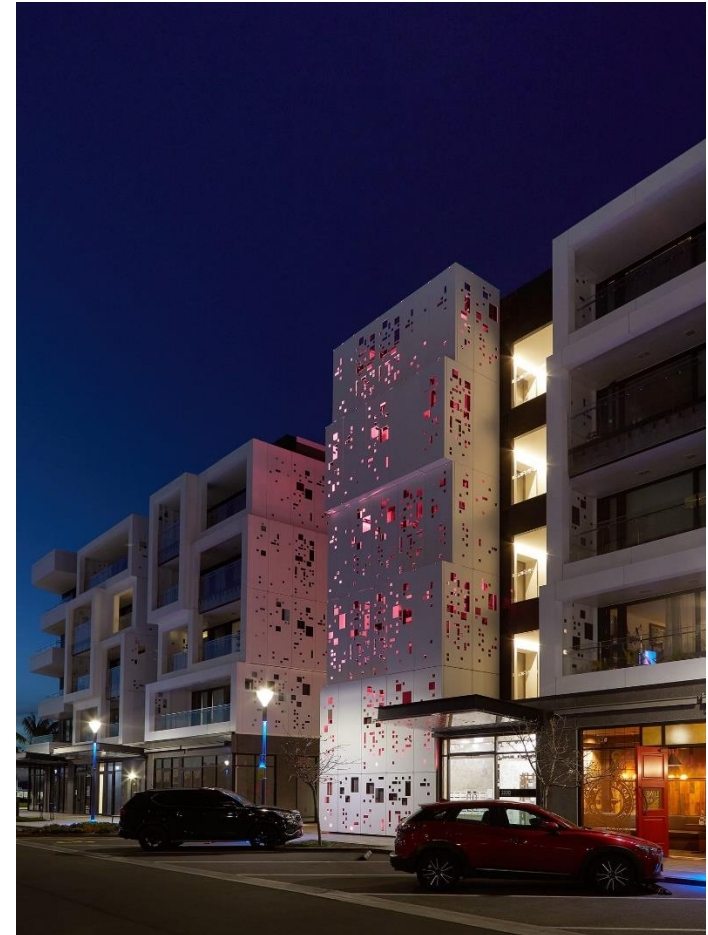
Project Credits

Location: Auckland

Architect: RTA Studio

Builder: GN Construction





With a vision of creating a new urban neighbourhood just a few KM's from downtown Auckland, Alexandra Park Stage 2 is an ambitious large scale development including 128 generously sized apartments, accompanied by over 9000 sqm of basement space split over two levels.

Helping to create a unique feel is a custom dapple pattern featuring random rectangles. Backlit with a changing colour palette, the dappled light illuminates internal walkways and the outside of the building, gently bringing the precinct to life as night falls.

The façade screen is formed from 3mm aluminium sheet finished with a white powder coating. We used C folded edges to reduce sub-structure framing requirements, with the deceptively complex stepping off the facade demanding both patience and precision. The meticulous approach was certainly worth it, creating that intangible 'something' to establish the unique character of the development.

HORIZON APARTMENTS

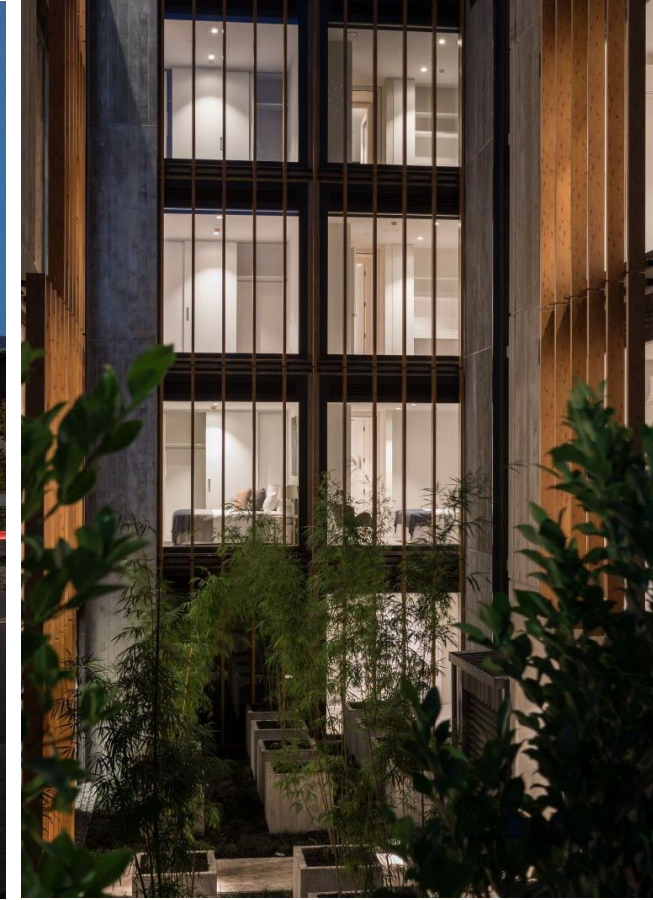
Project Credits

Location: Auckland

Architect: The Buchan Group

Builder: GN Construction





Designed to embrace the natural surrounds of Mission Bay, Horizon Apartments would offer panoramic views of the Hauraki Gulf, islands and greenery situated top the north.

The exterior was to be softened with the use of timber, linking the building to its surrounds, and adding a gentle warmth to both the appearance and feel of the high-end apartments.

That required warmth and natural appearance of timber is cleverly combined with the longevity and in-combustibility benefits of aluminium louvres. The louvres were finished with a woodgrain powder coat, which provides a highly realistic appearance of timber.

The final result is a façade which is largely indistinguishable from timber by sight.

OUTLOOK APARTMENTS

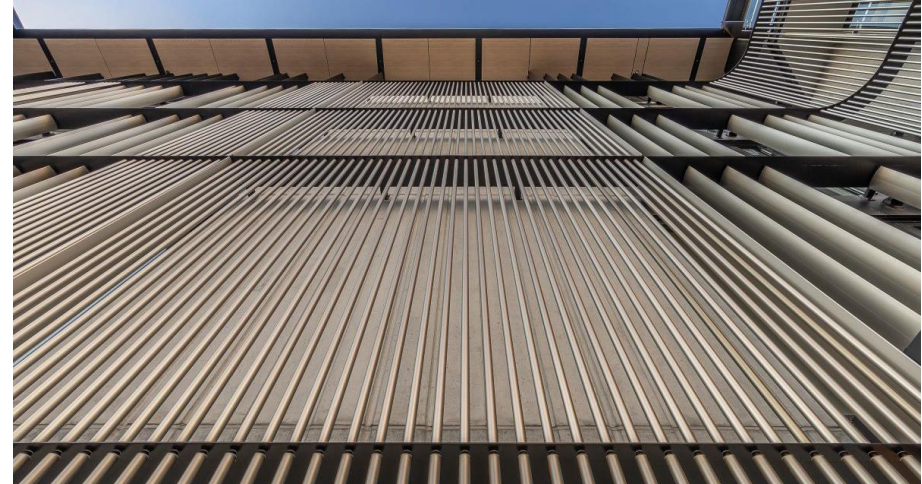
Project Credits

Location: Auckland

Architect: +MAP Architects

Builder: Clearwater Construction





These high spec apartments had multiple different forms of screening to meet the requirements of privacy, sun shading, and aesthetics demanded by such a location.

Insol's expertise was required to design and engineer multiple bespoke systems for the different forms of screening from glass fins and sliding louvre panels, to a fine tubular veil.

Insol assisted +MAP architecture early in the design phase with connection detailing. We methodically worked through each different screening system to provide a robust design that met the architectural intent.

The light reflection on the façade seemingly dances as you move past, playfully setting the building apart whilst maintaining a high level of distinction.

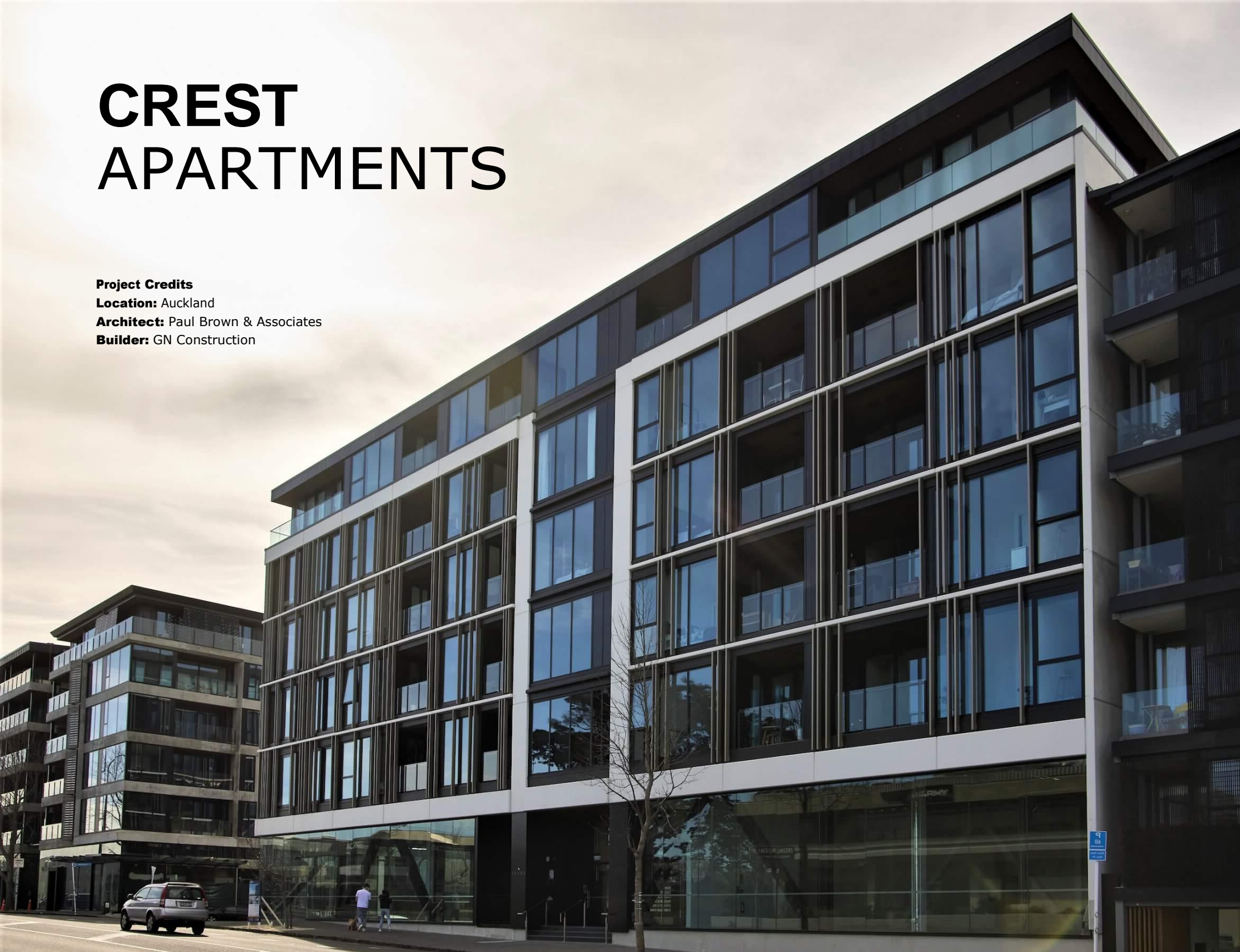
CREST APARTMENTS

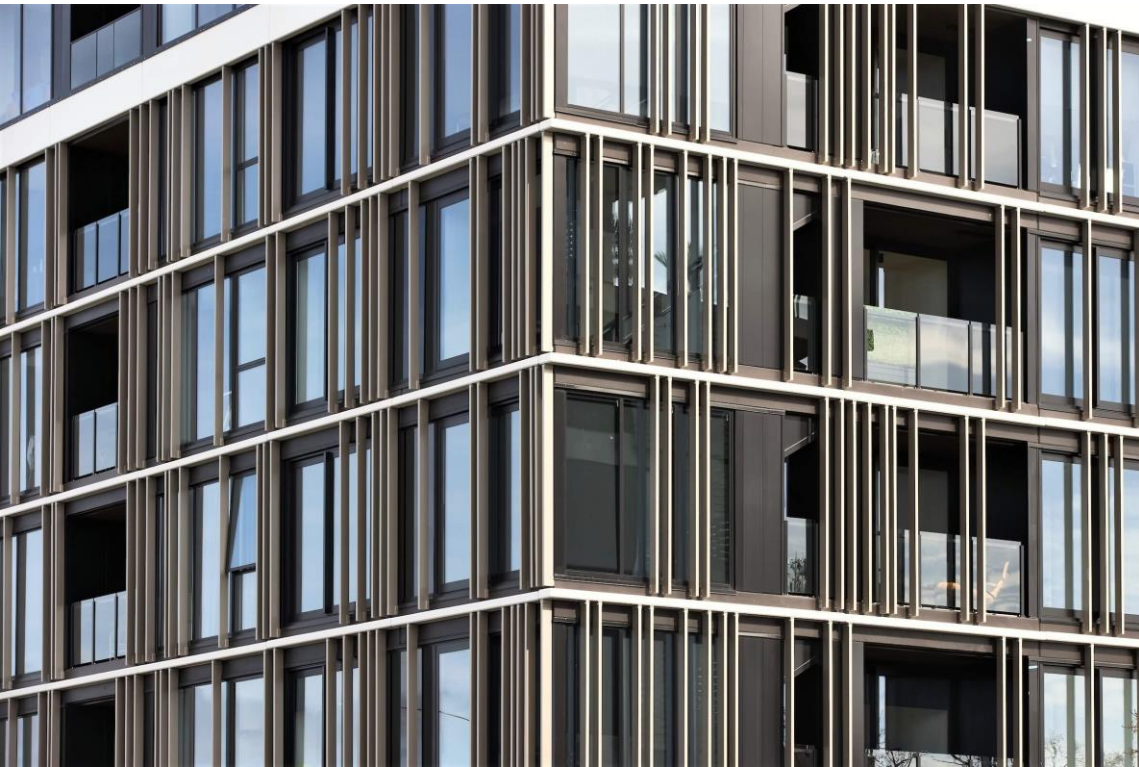
Project Credits

Location: Auckland

Architect: Paul Brown & Associates

Builder: GN Construction





In a unique buffering location, sandwiched between the busy commercial thoroughfare of Great North Road and neighbouring heritage area, the design had to provide a seamless transition and compliment nearby structures. Louvre's, whilst offering partial privacy and reduced glare, were primary to be employed for aesthetics. The clean lines were to be maintained with individually fixed louvre profiles.

Louvre spacing was repeated on every second level, so employing the louvres were correctly aligned and plumb was tricky.

The scaffold prevented most simple alignment methods, and the reinforcing steel embedded in the concrete conflicted with our fasteners in some locations.

Crest Apartments straddles two worlds, inhabiting both with an aesthetic that seamlessly transitions the gaze from one environment to another. The distinct building forms cleverly address the issues of their surroundings, the result being a beauty that blends but also strikes its own identity.

ON POINT APARTMENTS

Project Credits

Location: Auckland

Architect: Gel Architects

Builder: Waide Commercial Construction





A tellingly urban design intended to strike a bold and impactful aesthetic, *On Point* is home to 32 apartments, all cleverly optimised for modern living.

The design incorporates a transformational exterior which can be manipulated to allow in the required level of fresh air and/or sunshine. To make this possible, the design called for a sliding louvre configuration at the extreme outside, providing necessary solar control.

Those sliding screens are made up of vertically oriented Caldera 88 louvres. These feature an end mount within the sliding frame for safe and secure operability that is easy and relatively maintenance free. It's the perfect pairing, the parallelogram shaped louvres delivering a sharp and distinct appearance in keeping with the strong design aesthetic of the architectural intent.

HUAPAI COUNTRY CLUB

Project Credits

Location: Auckland

Architect: Ignite Architects

Builder: Form Building & Developments





The design, drawing from geographical history for inspiration, is largely defined by large wood grain louvres, which perform the remarkable trip of standing out whilst deepening the connection between the aesthetics of the country club style retirement village to the immediate surroundings. Opening up the environment further are a number of operable louvred roofs, allowed residents to make the most of the sunshine hours in considered comfort.

Solaris louvre use a sublimated wood grain powder coat to create a connection with the environment, whilst retaining the longevity and robustness of aluminium. For the residents, they provide privacy between balconies, while an operable roof provides respite from the peak daytime sun. This maximised the exterior living time for the residents and offers prolonged enjoyment of the external facilities at this quite remarkable complex.



Our specialised services support projects with demanding architectural detail and complex construction methodology. We push boundaries and challenge convention, backed by research, testing and advanced design & engineering.

We specialise in design solutions for complex projects with demanding architectural detail and construction methodology. Our combination of experience and expertise in design, engineering, manufacturing, and construction makes us uniquely placed to bring visions to fruition.

We focus on an issue long enough to understand it then we get to work on the solution. This is central to the Insol culture and the difference we bring. Working with architects on their vision, builders on their building methodology, or adjusting designs to meet budget. It's all completed with the considered efficiency you'd expect from the experts.

enquiries@insol.co.nz



7 Waokauri Place
Mangere Auckland 2022
Ph: 09 276 9735



34 Onslow Street
PO Box 231, Invercargill 9812
Ph: 03 216 3287



enquiries@insol.co.nz
www.insolarchitectural.com



